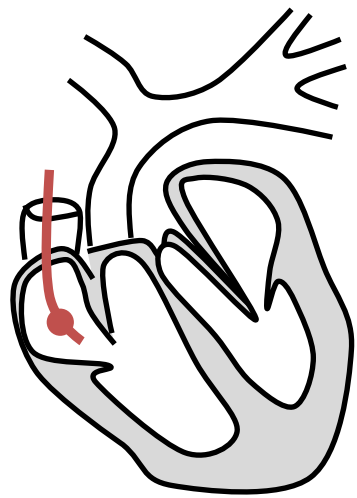


PULMONARY ARTERY CATHETER BASICS

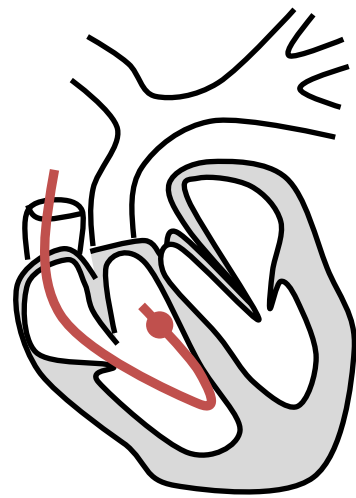
by Nick Mark, MD

ONE
onepagericu.com
@nickmark
Link to the most current version →



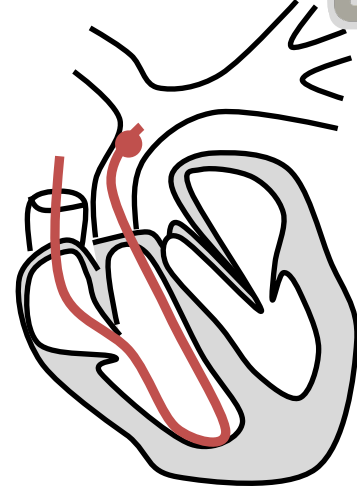
RA

2 - 6 mmHg



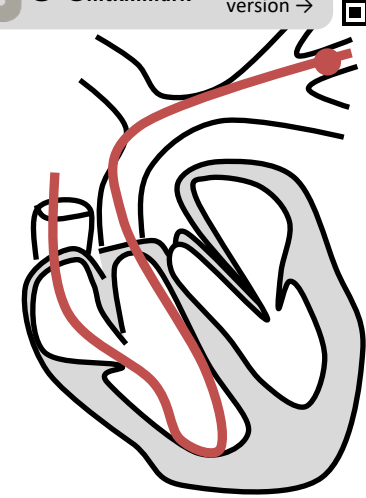
RV

20 - 30 mmHg
0 - 5 mmHg



PA

20 - 30 mmHg
5 - 15 mmHg



PCWP

4 - 12 mmHg

